



NORTH RISK
PARTNERS®



PATRON
DOT Compliance

FMCSA PORTAL: WHAT IT IS & HOW TO USE IT

APRIL 2024



PRESENTERS

Marc Nault

DOT Compliance Director
Patron

Kevin Honz

DOT Compliance Specialist
Patron

2024 FMCSA PORTAL CHANGES

In order to improve security and comply with a federal mandate for Multifactor Authentication (MFA), anyone with an FMCSA Portal account needs to take action by Dec. 1 to keep access to their account.

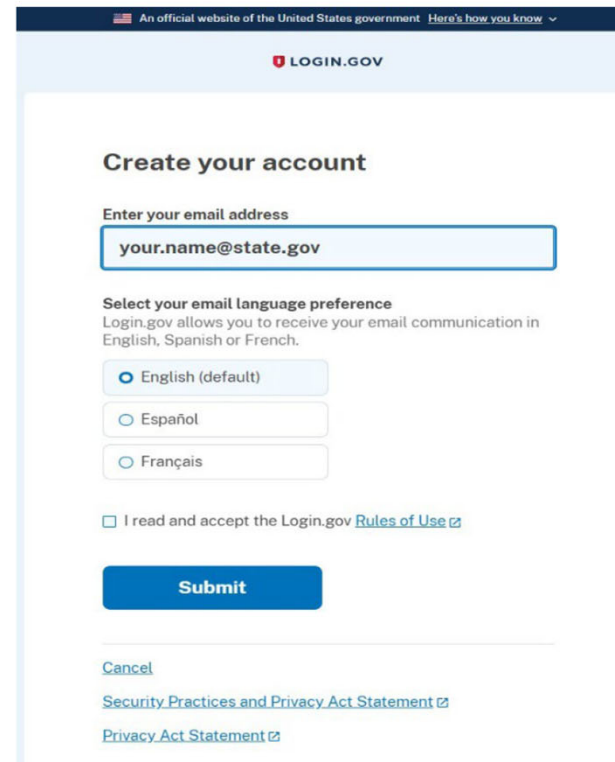
Users will now access the FMCSA Portal through a Login.gov account instead of using an FMCSA Portal username and password. All FMCSA Sites can now only be accessed through Login.gov. These sites include:

- Data Q
- FMCSA Portal
- FMCSA Clearinghouse
- Safety Measurement System
- Pre-Employment Screening Program

CREATING YOUR LOGIN.GOV ACCOUNT

Enter your email address at https://secure.login.gov/sign_up/enter_email to begin. Choose your official email address

Note: This must be the same email address that is used by the FMCSA Portal. Please make sure your FMCSA Portal email address exactly matches your Login.Gov email address. If not, please log into the FMCSA Portal with your Portal username/password and update your email address to be the same as your Login.Gov email address. Remember to click the “Update Profile” button in the upper right-hand corner of the page after you update your FMCSA Portal information.



The screenshot shows the 'Create your account' page on the Login.gov website. At the top, it says 'An official website of the United States government' and 'Here's how you know'. The page title is 'LOGIN.GOV'. The main heading is 'Create your account'. Below this, there is a form with the following elements:

- A label 'Enter your email address' above a text input field containing 'your.name@state.gov'.
- A section titled 'Select your email language preference' with the text 'Login.gov allows you to receive your email communication in English, Spanish or French.' Below this are three radio button options: 'English (default)' (selected), 'Español', and 'Français'.
- A checkbox labeled 'I read and accept the Login.gov Rules of Use' with a link to the 'Rules of Use'.
- A blue 'Submit' button.
- A 'Cancel' link.
- Links for 'Security Practices and Privacy Act Statement' and 'Privacy Act Statement'.



FMCSA Portal is using Login.gov to allow you to sign in to your account safely and securely.

You are already signed in with the following email:

✓ Email address

Continue

Or

Switch emails



F M C S A
Federal Motor Carrier Safety Administration

- As of January 1, 2024, users will be required to use Login.gov to access their FMCSA Portal account. Username and Password will no longer be available. If you don't have a Login.gov account yet, you must set up an account using your FMCSA Portal account email address in order to link the accounts.
- As FMCSA introduces Multi-Factor Authentication (MFA) to its systems, all users with credentials for any FMCSA system will be required to transition to a Login.gov account in lieu of their current credentials to access FMCSA systems.

The error message displayed below is an initial indication that the email address used to create your LOGIN.GOV account does not match and is not properly linked to your PORTAL account login. We'll cover where to go from here, a little later in the presentation.

We could not find a FMCSA portal account that matches your login.gov email address.

If you have a portal account, please ensure that your portal email address and your login.gov email address match.

If you don't have a portal account, you can [sign up here](#).

[Go back to the FMCSA Portal login page](#)

Error code 1. Error id: c88be538e33251471820e3d2d2c0b5c2



Account Request

Step 1-2-3-4-5-6

FMCSA Portal Accounts are available for different types of users. Please select if you would like an account as a "Company User" or "Enforcement User" based on the information listed below.

Company User

Company Employee or an Associate of a Company

Enforcement User

Federal, State, and Third Party Enforcement Employees

Next >> Cancel



Account Request

Step 1-2-3-4-5

Select Portal Roles

USDOT # List Enter the USDOT# you want access to. Click the "Lookup" button to see if your USDOT# is registered in our system.

USDOT #: 4146117 Lookup

Available Roles

Empty list box for Available Roles

Add Role >

< Remove Role

Requested Roles

Empty list box for Requested Roles

Reason for Request

Empty text area for Reason for Request

Role Selection Description

Empty text area for Role Selection Description

Remove USDOT#

Add USDOT to List

<< Back Next >> Cancel



portal.fmcsa.dot.gov says

Currently there is not a Company Official registered in the FMCSA Portal for the entered USDOT # 3265526. A Company Official is an individual who represents a company with a USDOT# registered with FMCSA, and is responsible for administering access to the company's sensitive information in the FMCSA Portal or other FMCSA Systems for the specific USDOT#. Please contact the person expected to be the Company Official for the USDOT # for which you are applying for access and ask them to register with the FMCSA Portal. Once the Company Official has registered in the FMCSA Portal, you may submit your account request. If you are

OK

Account Request

Step 1-2-3-4-5

Select Portal Roles

USDOT # List Enter the USDOT# you want access to. Click the "Lookup" button to see if your USDOT# is registered in our system.

USDOT #: 3265526 Lookup

Available Roles

Requested Roles

Reason for Request

Add Role >

< Remove Role

Role Selection Description

Remove USDOT#

Add USDOT to List

Account Request

Step 1-2-3-4-5

Select Portal Roles

USDOT # List Enter the USDOT# you want access to. Click the "Lookup" button to see if your USDOT# is registered in our system.

USDOT #: 3265526 Lookup

Pin #: ***** Validate Pin

Company Legal Name: Currently there is not a Company Official registered in the FMCSA Portal for the entered USDOT # 3265526. A Company Official is an individual who represents a company with a USDOT# registered with FMCSA, and is responsible for administering access to the company's sensitive information in the FMCSA Portal or other FMCSA Systems for the specific USDOT#. Please contact the person expected to be the Company Official for the USDOT # for which you are applying for access and ask them to register with the FMCSA Portal. Once the Company Official has registered in the FMCSA Portal, you may submit your account request. If you are requesting access to the FMCSA Portal as the Company Official you must enter and validate the FMCSA issued PIN associated with the USDOT# for which you are requesting access.

Available Roles

Requested Roles

Reason for Request

Add Role >

< Remove Role

Role Selection Description

Remove USDOT#

Add USDOT to List

<< Back Next >> Cancel





Account Request

Step 1-2-3-4-5

Select Portal Roles

USDOT # List

Enter the USDOT# you want access to. Click the "Lookup" button to see if your USDOT# is registered in our system.

* USDOT #:
 * Pin #:

Company Legal Name: Currently there is not a Company Official registered in the FMCSA Portal for the entered USDOT# 3255525. A Company Official is an individual who represents a company with a USDOT# registered with FMCSA, and is responsible for administering access to the company's sensitive information in the FMCSA Portal or other FMCSA Systems for the specific USDOT#. Please contact the person expected to be the Company Official for the USDOT# for which you are applying for access and ask them to register with the FMCSA Portal. Once the Company Official has registered in the FMCSA Portal, you may resubmit your account request. If you are requesting access to the FMCSA Portal as the Company Official you must enter and validate the FMCSA issued PIN associated with the USDOT# for which you are requesting access.

Available Roles

- Portal Company Official

Requested Roles

- Portal Company Official

Reason for Request

CSA Management

Role Selection Description

undefined



Account Request

Step 1-2-3-4-5

Please enter the information below.

*Indicates Required Information
Please Note: Special characters {}[]' " can not be used in personal information

Personal Information

*First Name:

Middle Name:

*Last Name:

*Email:

*Verify Email:

*User ID: (User id should be in email format)

*Password: (must include all of the 4 rules: combination of numbers, letters, special characters, and mixed case)

*Verify Password:

Security Identification

*Question 1:

*Answer 1:

*Question 2:

*Answer 2:

*Question 3:

*Answer 3:





IF WHEN YOU CREATED YOUR PORTAL LOGIN CREDENTIALS, YOU USED ANYTHING BESIDES THE SAME EMAIL FOR YOUR USERNAME THAN YOU USED FOR YOUR LOGIN.GOV ACCOUNT – YOU WILL SEE THE ERROR MESSAGE BELOW. TO REPAIR AND LINK THE ACCOUNTS *SEE NEXT SLIDE

Login to Access the FMCSA Portal

To ensure your Login.gov account is correctly linked to your Portal user roles, use your Portal e-mail address when you create your Login.gov account.

[Sign in with Login.gov](#)

Are you a DOT employee or contractor that has a PIV card? Use the link below to login with MyAccess.

[Launch MyAccess](#)

To register for a portal account, please click [here](#).

To access portal training, please click [here](#).

You are accessing a U.S. Government information system. This information system, including all related equipment, networks, and network devices, is provided for U.S. Government-authorized use only. Unauthorized or improper use of this system is prohibited, and may result in civil and criminal penalties, or administrative disciplinary action. The communications and data stored or transiting this system may be, for any lawful Government purpose, monitored, recorded, and subject to audit or investigation. By using this system, you understand and consent to such terms.

For details on how we use your information, please see our [Privacy Policy](#).

We could not find a FMCSA portal account that matches your login.gov email address.

If you have a portal account, please ensure that your portal email address and your login.gov email address match.

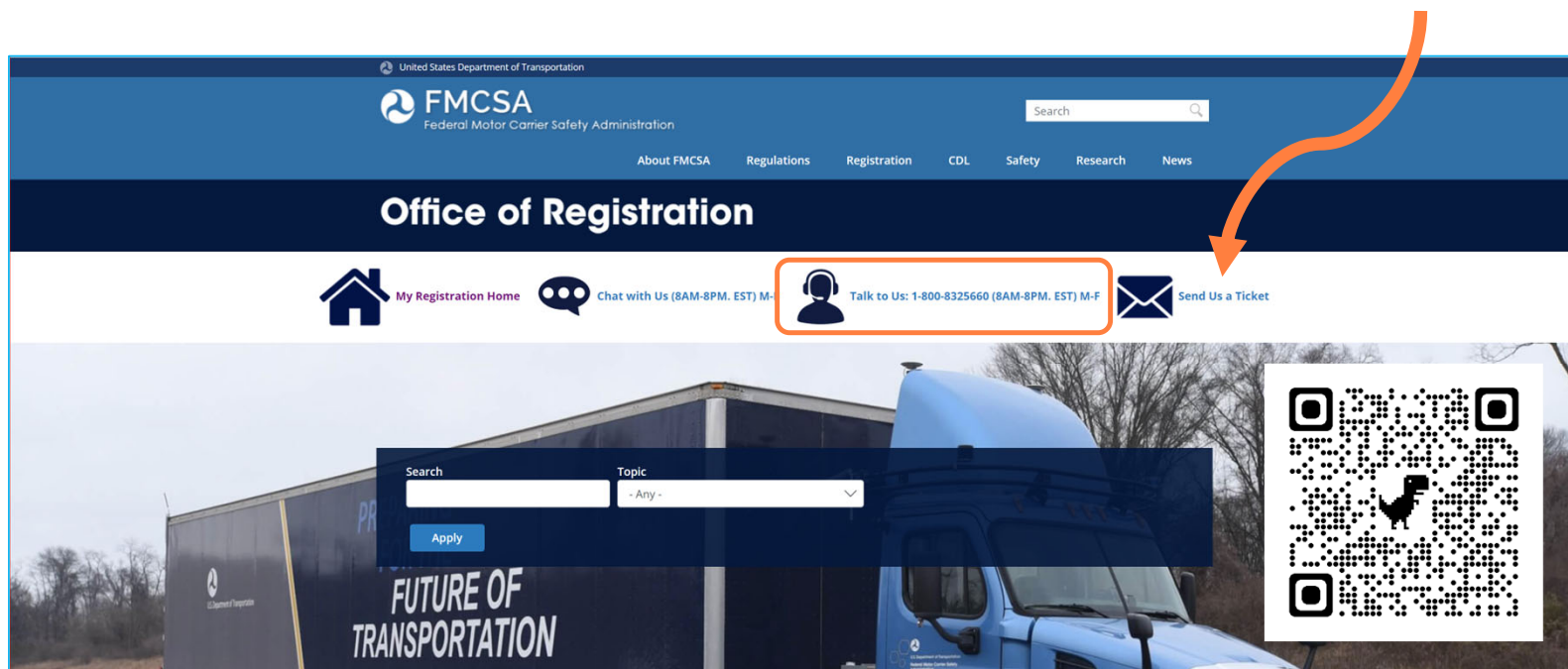
If you don't have a portal account, you can [sign up here](#).

[Go back to the FMCSA Portal login page](#)

Error code 1. Error id: c88be538e33251471820e3d2d2c0b5c2

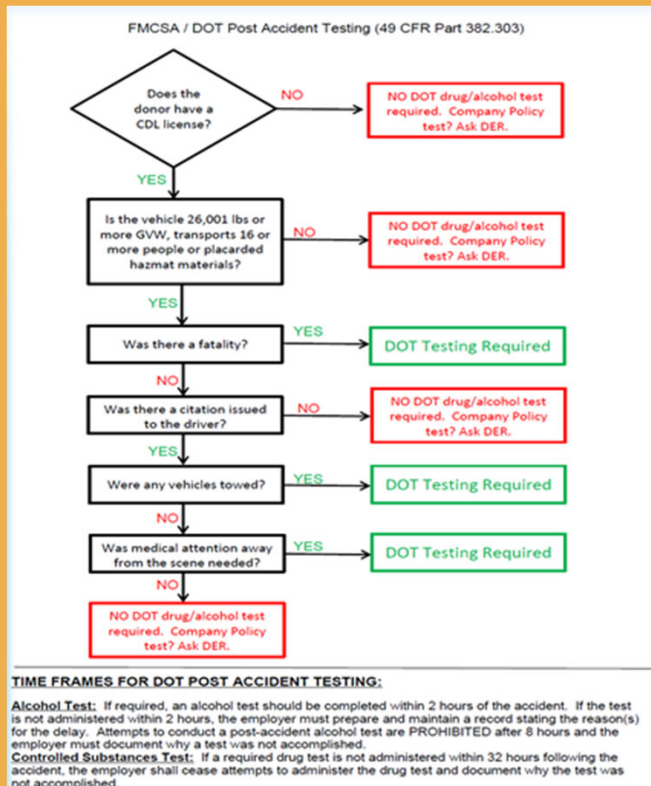
If you previously created a portal account using a username rather than an email address – you may be experiencing difficulty accessing that portal account to make the necessary changes to your username in that it's consistent with the one use for your login.gov account.

Your next steps will require: Contacting the FMCSA. Sending a ticket may save you time spent being placed on hold in a queue that can be anywhere from minutes to hours long.

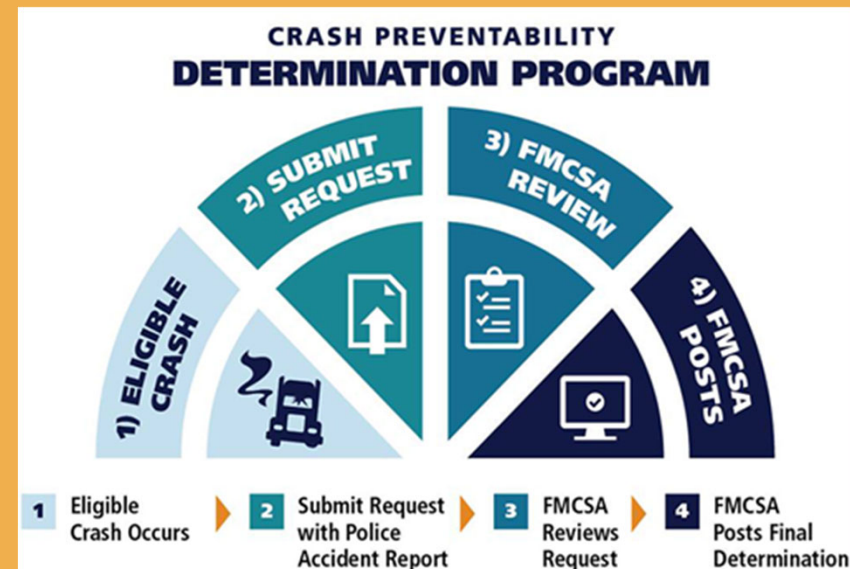


<https://www.fmcsa.dot.gov/registration/ask-fmcsa>

Immediately following a crash – communication with the involved driver is crucial to ensuring your post-accident investigations, documentation and procedures are completed in a timely manner and in accordance with the regulatory requirements.



YOUR DRIVERS SHOULD REMAIN IN THE VEHICLE TO CONTACT THE STATE PATROL AND A DESIGNATED SAFETY DIRECTOR FOR YOUR FLEET.



PREPARE YOUR DRIVERS TO TAKE PHOTOS AT THE SCENE OF THE ACCIDENT WHEN POSSIBLE TO HELP BUILD UP THE NECESSARY SUPPORTING DOCUMENTATION TO SUPPORT YOUR CASE.

BE AN ADVOCATE FOR YOUR INDUSTRY'S REPUTATION

- Under the pilot program, in place since 2017, the FMCSA reviewed more than **5,600 crashes** submitted by truck and bus companies to determine if the crash could have been prevented by the carrier. In **94%** of cases, it was found that the accidents were not preventable by the driver or carrier.
- **5,264 non-preventable crashes were expunged.**

This was roughly 3 years-worth of data and only covers the crashes that were submitted by Motor Carriers for removal from the Crash Basic in the Safety Measurement System, improving their overall CSA scores.

INTERNATIONAL ROADCHECK 2024

May 14-16



This year's International Roadcheck will focus on tractor protection systems and controlled substance and alcohol possession.

Tractor Protection and Anti-Bleed Back Systems

A commercial motor vehicle's tractor protection system consists of a tractor protection valve, trailer supply valve and anti-bleed back valve. All valves should be properly tested during a driver's trip inspection and an inspector's roadside inspection.



During the inspection of tractor protection system components, the inspector will:

- ✔ Ensure the wheel chocks are still in place and have the driver release all the brakes by pressing dash valves.
- ✔ Have the driver carefully remove the gladhands and allow air to escape.
- ✔ Ensure the air stops leaking from the supply line with at least 20 psi remaining.
- ✔ Listen and/or feel for any leaking air at the gladhand couplers on the trailer.
- ✔ Request a full service brake application by the driver.
- ✔ Listen and/or feel for leaks from both air lines.

Check the 2010-01 – Tractor Protection Systems inspection bulletin at www.cvsa.org/inspections/inspection-bulletins for the tractor protection system testing procedure.

Controlled Substance and Alcohol Possession

Controlled substance and alcohol possession by commercial motor vehicle drivers is a significant concern. In addition, the number of prohibited drivers in the U.S. Drug and Alcohol Clearinghouse (DACH) is increasing. This alarming trend poses a threat to all motorists on our roadways.

While checking for the presence of alcohol or controlled substances during an inspection, inspectors will:

- ✔ Observe the driver for signs of alcohol or controlled substance use and/or impairment.
- ✔ Examine the cab and trailer for alcohol or controlled substances.
- ✔ Conduct a query in the DACH (for inspections in the U.S.).

Tips for Motor Carriers

- ✔ Establish and strictly enforce clear policies to prevent controlled substance and alcohol possession or use in the workplace.
- ✔ Regularly query the DACH to ensure your drivers are not in prohibited status.

Tips for Drivers

- ✔ Do not possess, use or be under the influence of alcohol or controlled substances while on duty. Remember, you are prohibited from having any detectable presence of alcohol and cannot use alcohol within four hours of coming on duty.

2010-01 – Tractor Protection Systems

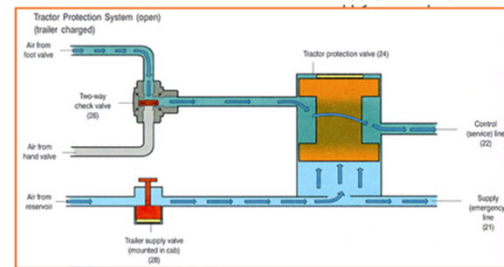
System Description

The tractor protection system consists of two valves. One is the trailer supply valve (TSV), a push/pull valve located on the instrument panel. The other is the tractor protection valve (TPV), located on the towing vehicle's frame or body. The TPV is also called a towing vehicle protection valve.

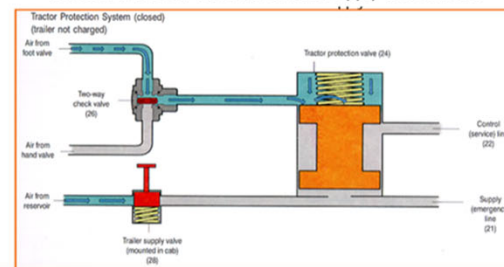
The TSV has a red-colored, eight-sided knob and is controlled by the driver. The driver opens (pushes in) the TSV when a trailer is being towed and closes it (pulls out) when there is no trailer present. The TSV can also be used to set the trailer's parking brakes. The TSV is sometimes also referred to as the tractor protection control valve.

The TPV serves as the on/off port for signaling service brake air going to the trailer. It is the connection point for both the trailer supply/emergency line and the trailer service line. The TPV passes service brake control signals only when it is open and blocks the signals when it is closed.

Tractor Protection Valve and Trailer Supply Valve Open



Tractor Protection Valve and Trailer Supply Valve Closed



For more information, visit www.roadcheck.org.



THE CLEARINGHOUSE DATABASE AND WHAT IT MEANS FOR YOU



WHAT IS THE FMCSA CLEARINGHOUSE DATABASE?

The FMCSA Clearinghouse database is an electronic database recently put in place for the trucking industry. This new Clearinghouse database allows the FMCSA and Department of Transportation (DOT) to monitor and track any infringements upon their drug and alcohol policies. Employers and drivers can view records of drug and alcohol program violations within the Clearinghouse.

WHAT DOES IT MEAN FOR YOU?

<p>EMPLOYERS OF CDL DRIVERS</p> <p>To stay FMCSA and DOT compliant, employers must register with the Clearinghouse and fulfill the above requirements of submitting information to the database and performing queries as needed.</p>	<p>NON-CDL DRIVERS</p> <p>The Clearinghouse was designed for CDL drivers and their employers, so its requirements don't apply to non-CDL drivers. Employers are not required to submit queries with the Clearinghouse for non-CDL drivers but should still conduct background checks in accordance with other FMCSA standards.</p>
<p>CDL DRIVERS</p> <p>CDL drivers are not required to register with the Clearinghouse but may register and view their records if they so choose. The exception to this rule is that CDL drivers will be required to register if they are applying for a position at a new company and need to consent to a full query.</p>	<p>LEARN MORE AT LABWORKS USA.COM</p>

CONTACT US

- ▶ **DataQs Technical Support:**
DataQs Help Center | (877) 688-2984 (option 1)
<https://dataqs.fmcsa.dot.gov/HelpCenter/Topics>
- ▶ **Training Provider Registry:**
TPR FAQs | (877) 688-2984 (option 8)
<https://tpr.fmcsa.dot.gov/FAQ/Search?Keyword=>
- ▶ **Drug & Alcohol Clearinghouse:**
Clearinghouse FAQs | (844) 955-0207
<https://clearinghouse.fmcsa.dot.gov/FAQ>
- ▶ **Portal Registration Assistance:**
Portal | (800) 832-5660
<https://portal.fmcsa.dot.gov/training/index.htm>
- ▶ **Motor Carrier PIN Assistance:**
Request PIN | (800) 832-5660
<https://www.fmcsa.dot.gov/registration/request-pin-number>



F M C S A
Federal Motor Carrier Safety Administration

QUESTIONS?



NORTH RISK WEBINARS | 2024